

Virtual Machine Installation

Virtual Machine Installation

FileCloud is provided as a Virtual Machine (in OVF format) so that it is easy to get started without doing any configuration or setup. The virtual machine also allows customers to quickly evaluate and try FileCloud in other non-Linux environments.

The FileCloud Virtual Machine has the following specifications :

Operating System	Ubuntu 14.04.03 64 bit LTS with Desktop
Disk Size	200 GB
RAM	2 GB

The following is the OS user login information

Username	cloud
Password	cloud

The following is the FileCloud Admin login information

Username	admin
Password	password

Installing Virtual Machine

1. Download the FileCloud OVF zip using the provided link.
2. Unzip the zip file with all the contents into your hard disk
3. See for [VMWare Player Install Instructions](#)
4. See for [VirtualBox Install Instructions](#)

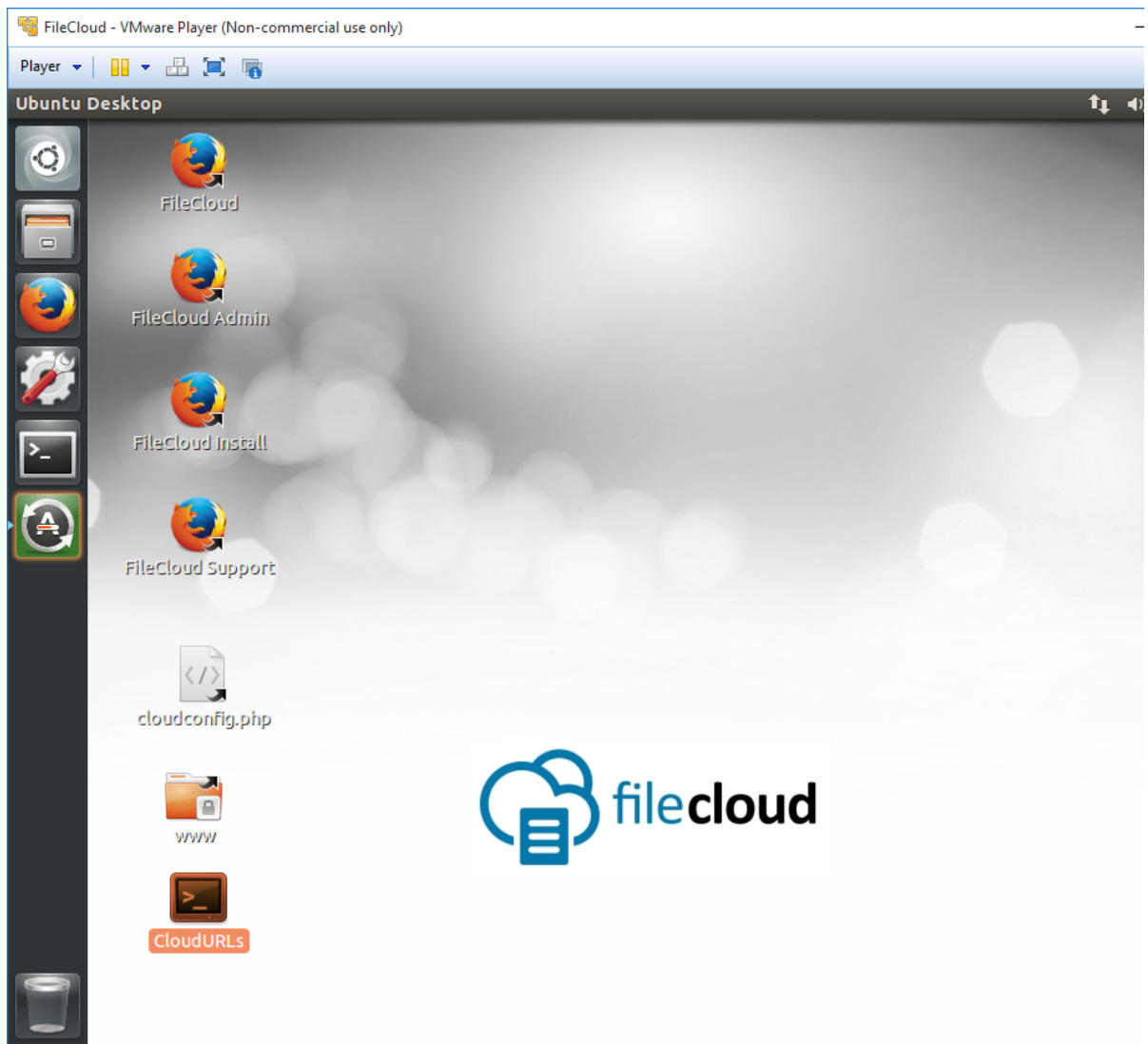
Running the Virtual Machine

1. On startup, enter "cloud" as the password to login into the system.
2. After login, you will see the desktop with several icons.
3. Refer to shortcuts section for more details on the icons and how to use them.

FileCloud



password




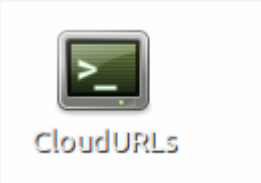





Shortcuts

Here's the information on each shortcut and it's function.

ICON	Details
	Opens the main FileCloud User Portal.
	Opens the FileCloud Admin Portal User name: admin Default Password: password

 <p>FileCloud Install</p>	Opens the FileCloud Install Check Page
 <p>cloudconfig.php</p>	Shortcut to the general cloud configuration file (cloudconfig.php).
 <p>FileCloud Support</p>	Shortcut to the FileCloud support documentation.
 <p>CloudURLs</p>	Click the icons to generate the URLs that can be used to access the FileCloud from outside the virtual image. Note: Depending on the network configuration, these links can be used to access FileCloud from anywhere on the local network (Bridged configuration) or from within the host (host-only or NAT configuration)
 <p>WWW</p>	Shortcut to the folder containing all cloud files.