

# FileCloud Server 20.2 Release Notes

Version 20.2.0.11915 New installation: [Installing FileCloud Server](#) Upgrade Notes for FileCloud 19.2 to 20.3 *Note: A full system upgrade is required for all existing installations.*

## Releases

[Sept 2020 vers. 20.2](#)

[May 2020 vers. 20.1](#)

[Dec 2019 vers. 19.3](#)

[Sep 2019 vers. 19.2](#)

[Apr 2019 vers. 19.1](#)

[Sep 2018 vers. 18.2](#)

[May 2018 vers. 18.1](#)

## September 2020 release of FileCloud (version 20.2) is now available.

Patch 20.2.4 fixes these [issues](#).  
Drive Patch 20.2.0.4958 fixes these [issues](#).  
Sync/Drive Patch 20.2.0.4932 fixes these [issues](#).

Patch 20.2.3 fixes these [issues](#).  
Patch 20.2.2 fixes these [issues](#).  
Patch 20.2.1 fixes these [issues](#).

Upgrade to access new, easy to navigate user interfaces and enhanced features. Here are some highlights of the release:

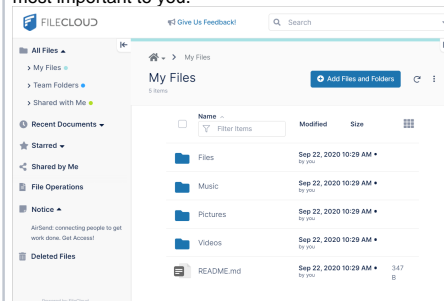
- [User Portal redesign](#) - Completely new, easy-to-navigate user interface.
- [FileCloud Sync application](#) - Updated look with intuitive functionality.
- [Digital Rights Management \(DRM\)](#) - A new feature that provides more restrictive security for documents.
- [New Mobile UI look](#) - A new interface that matches the updated look of the user portal.
- [McAfee CASB integration](#) - Integration with a third-party DLP application.
- [Outlook Add-in](#) - Enhanced to include a FileCloud explorer in the right panel as well as the new message box.

## On this page

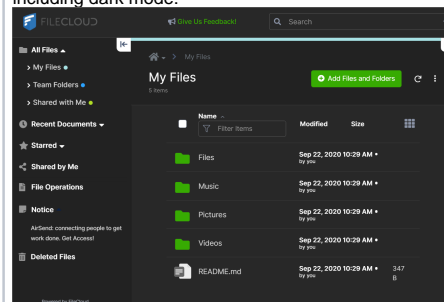
- [User portal](#)
- [FileCloud Sync application](#)
- [DRM](#)
- [Mobile UI](#)
- [McAfee CASB integration](#)
- [Outlook Add-in](#)
- [Enhancements](#)
- [Bug Fixes](#)

## User portal

The user portal now has an entirely new look and feel, making it easier to locate the files and actions that are most important to you.



The new interface includes different display options, including dark mode:

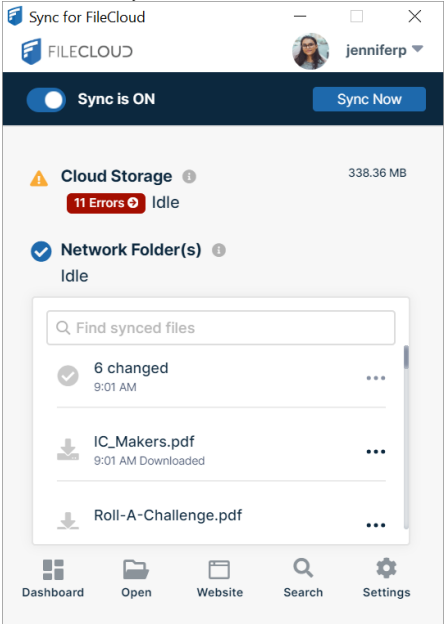


**Note:** There is an administrator-controlled setting that enables users who want to use the classic interface to switch back to it.

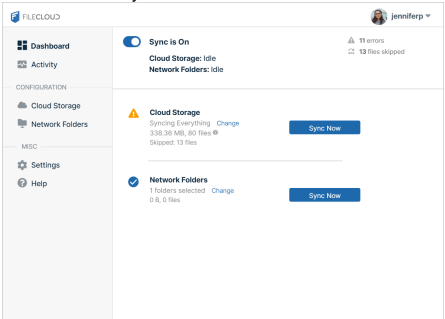
# FileCloud Sync application

FileCloud Sync has a new user interface that streamlines its functionality and includes a new mini-dashboard to make it simple to access frequently used actions and options.

The FileCloud Sync mini-dashboard



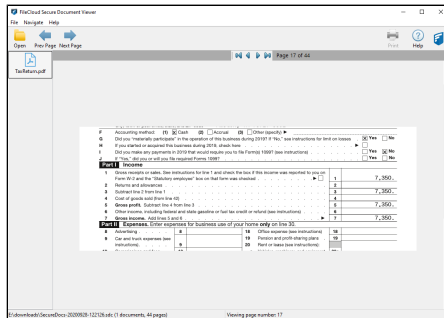
The FileCloud Sync Main Dashboard



## DRM

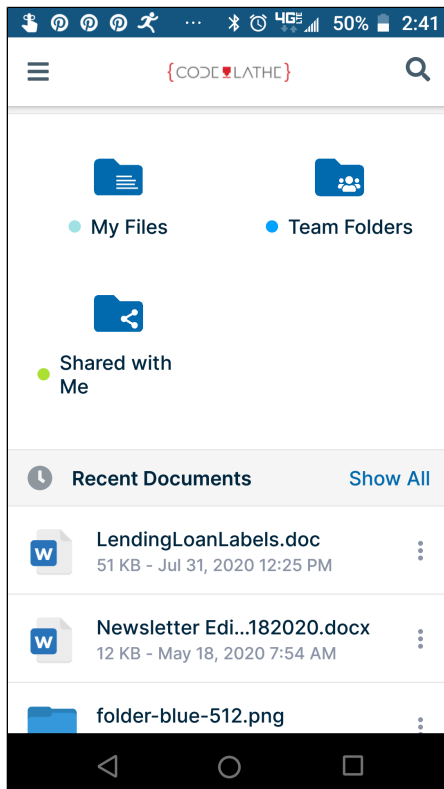
The FileCloud user portal now has a Digital Rights Management (DRM) feature that enables users to download office files, PDFs, and image files securely. The feature requires users to view securely downloaded files through a Secure Document Viewer using an access key.

The Secure Document Viewer has a restricted viewing mode that allows you to block selected parts of a document; as users scroll through the document, the restricted sections are hidden and the unrestricted settings are visible, as in the following image.



## Mobile UI

The mobile applications have a sleek new interface that corresponds to the user portal's new look.



## McAfee CASB integration

FileCloud is beginning support of third-party DLP providers by integrating with McAfee CASB's file monitoring features to identify potential security leaks.

In this release, FileCloud supports McAfee's monitoring of file uploads, updates, downloads, and shares, as well as its review of account creation, account deletion, and user login activities.

FileCloud's API now includes endpoints that enable McAfee CASB to respond to potential breaches by notifying users, deleting files, and removing shares.

See [McAfee CASB integration](#).

## Outlook Add-in

The Outlook Add-in now enables users to access files from a FileCloud explorer in the right panel. A FileCloud explorer also appears in the new message box, enabling users to drag and drop files into messages, and to drag and drop files from messages into FileCloud. See [FileCloud Add-In for Microsoft Outlook](#).

## Enhancements

	Area	Feature	Notes
<b>Server</b>			
CL-5957	DLP	A new DLP expression uses GeolP technology to enable login and download control based on country code. See <a href="#">Rule Expressions</a> .	
CL-4143	Shares	When users share a file privately, they can now include edit (upload) permission.	
CL-3690	Share	New functionality enables users to add multiple users to a share and then click email to send one email to all of the users.	

	FileCloud Drive application improvements	Improvements have been made to the FileCloud Drive app including:	
--	--	---	--

- A button that enables a user to immediately commit pending changes to the server. See [Settings](#).
- The replacement of pop-up notifications for each file upload and download with summary notifications in the Recent Activity screen.
- Functionality for uploading up to 5 files at one time.
- Icons in Drive folders indicating whether or not a file has been cached. See [What is FileCloud Drive?](#)

CL-5310	Terms of Service	In the Admin portal, several of the Terms of Service options that appeared on the Customizations page now appear on the Settings page on the Misc /Privacy tab. The Terms of Service text is the only option that now appears on the Customizations page on the TOS tab.	
CL-6477	2FA	FileCloud licensing that includes enabling 2FA for limited users is now available for Enterprise customers.	
CL-6414	Azure Blob	FileCloud's seeding tool now supports Azure blob migration.	
CL-6422	Backup Server	The backup server now supports the RSYNC protocol as well as the HTTP protocol for file downloads.	
CL-6260	CCE	The CCE audit log now includes realpath, svcname ("CCE"), and svcid (rule name).	
CL-6848	Command line interface	The command line interface now supports commands for customizing the admin password.	
CL-5903	Content search	A search bar for PII regex patterns has been added to the Content Search settings.	

CL-6341	Copy, move, delete	Enhancements have improved the process of copying, moving, or deleting large numbers of files from the same folder.	
CL-4332	Delete shares	Functionality has been added to enable users in the admin portal or user portal to select multiple shares and delete them.	
CL-6423	Direct links	There is now an option to hide the Direct link action.	See <a href="#">Share Settings</a>
CL-6396	DLP	There is now a DLP rule for filtering based on the source user's email domain.	See <a href="#">Rule Expressions</a>
CL-6684	Downloads	Support has been added for downloading larger numbers of files simultaneously.	
CL-5755	Email	Users can now enter recipients of email messages from FileCloud in the format "User <user@site.com>" as well as "user@site.com"	
CL-7023	Files	A flag that indicates the type of shares allowed has been added to the system status call.	
CL-6660	ICAP	When the ICAP service blocks a file, FileCloud now shows a message that gives the reason for the block.	

CL-3971	Keyboard shortcuts	Keyboard shortcuts have been added for major functions in the user portal to comply with Web Content Accessibility Guidelines.	
CL-6730	Log in	There is a new setting that enables FileCloud to display SSO login only.	See <a href="#">Customize the User Login Screen</a>
CL-6445	Phone number	There is now a customization setting for adding a formatting hint that appears next to phone number fields.	See <a href="#">General Customization</a>
CL-6537	Policies	Policy settings have been added that enable administrators to change the default UI version (new or classic) and to disable user ability to change the UI version.	
CL-5440	Previous versions	The ability to download all previous versions of a file at once has been added.	See <a href="#">View Previous Versions Of Files</a>
CL-6333	S3	To correspond with Amazon's new bucket name requirements, FileCloud no longer supports S3 bucket names with a dot (.) in them; however, prior S3 bucket names with a dot in them are still valid.	



CL-5249	Sort	Once a user changes the sort setting for a folder in the user interface, the change is saved and reapplied after logging out and logging in and when logging in from a new browser.	
CL-6372	Translation	Russian language supports has been added for the Web Sync and Drive clients.	
CL-6790	Usability	<p>Several usability features have been added, including:</p> <ul style="list-style-type: none"><li>• File preview icons now have tool tips.</li><li>• Search boxes now have an 'x' for deleting text.</li><li>• When a private share is created without any users or groups specified, the user is warned before the share is saved.</li><li>• Change password fields now include a button for viewing the text.</li></ul>	

- When a user does not enter a phone number for 2FA, the user now remains on the page instead of being sent to the log-in screen.
- When multiple files are uploaded, instead of listing the files after all are uploaded, each file is listed when its upload is complete.
- When users click the icon to exit a password-protected share screen, they are prompted to confirm.

CL-5030	User interface	User promoted to be admin users can now switch to the Admin portal from the User portal.	
CL-6180	VPAT	FileCloud is now in compliance with VPAT Guideline 1.4.	
CL-5738	Watermarks	Insertion of watermarks onto view-only shared documents has been added.	
<b>Online</b>			

CL-6525	CSS	Support has been added for admins to include custom css.	
<b>Sync</b>			
CL-6122	Conflict	Users can now add a setting to the Sync config file to automatically resolve conflicts.	See <a href="#">XML Options for Sync</a> .
CL-6356	Timestamp	Timestamp when file is created is now saved.	
<b>ServerLink</b>			
CL-6948	ServerLink	FileCloud has tools for resyncing ServerLink. Contact Support for help.	

## Bug Fixes

Reference Number	Area	Description
<b>Server</b>		
CL-3326	2FA	2FA can now be enabled for Limited users.
CL-6334	2FA	Users can now specify the number of characters in an SMS 2FA code and what combination of numbers, letters, and uppercase letters it uses.
CL-6479	2FA	2FA log in no longer fails when users include uppercase letters in the log-in username.
CL-6525	Active directory	When all users were removed from an AD group, after syncing, the users were not removed from FileCloud. This has been fixed.

CL-6340	Admin username	The main admin username may now only include letters, numbers, and the special characters: space, period, hyphen, and underscore. It may not be the same as the superadmin name.
CL-6497	Alerts	Alerts were not displayed in the Admin UI after the alert count reached 100; this has been fixed.
CL-6749	Antivirus scanning	Users were not notified if the ICAP server failed, and uploaded files that were not scanned were not deleted; now, a message appears when the ICAP server fails, and a setting enables admins to delete unscanned files. See <a href="#">Use ICAP Antivirus Scanning</a>
CL-6757	Antivirus scanning	Users were not notified if the ClamAV server failed, and uploaded files that were not scanned were not deleted; now, a message appears when the ClamAV server fails, and a setting enables admins to delete unscanned files. See <a href="#">Use ClamAV Antivirus Scanning</a> .
CL-6797	Audit	A problem causing private shares to appear as 'Public shared <path>' in the audit database has been fixed.
CL-6361	Backup Server	A bug preventing the backup server from restoring 0kb files has been fixed.

CL-6696	Backup Server	Backup server query performance has been improved.
CL-7327	Backup Server	The backup server ui is now able to paginate the backup jobs table.
CL-6847	Content Search	A problem preventing indexing of files uploaded to a network share folder with NTFS permissions has been fixed.
CL-6877	Display name	When display names are imported, the pipe character   is now supported.
CL-6704	DLP	When an Enforce DLP rule failed, evaluation stopped, and only one violated rule was being logged. These issues have been fixed.
CL-6463	Document preview	Users with view-only access to shares can now preview them in Office in systems that use WOPI and js viewer.
CL-6467	Email	A problem causing duplicate emails to be sent for systems using HA clusters has been fixed.
CL-6613	Email validation	In some cases, although limited user email domains were different from their server URLs, as required, the system sent the error message that the domain was invalid. This has been fixed.
CL-6451	Email validation	Creating a user who receives an invitation was prevented if the email had admin as its prefix, this is now permitted.

CL-6977	FileCloud helper	A problem causing FileCloud helper to push an incorrect path to FileCloud has been fixed.
CL-6773	Folder actions	Folders are now locked when an operation is being performed on them.
CL-6879	Groups	A problem causing the Everyone group to incorrectly display 0 members has been fixed.
CL-6993	ICAP	Scan requests now include the name, email, and type of the requesting user.
CL-6349	jQuery	The versions of jQuery in smartadmin and bootstrap were updated.
CL-5802	License	If a license was renewed before the expiry date, cron was failing to get the license information; this has been fixed.
CL-6462	Log out	A problem causing auto-log out in the Admin portal to work incorrectly has been fixed.
CL-6709	Login screen	Now, instead of a drop-down that displays Forgot password, Forgot password is displayed directly on the log-in screen.
CL-6416	Logs	An issue causing the backslash after the final folder name to not appear in some folder paths in the audit log has been fixed.

CL-6210	Logs	Logs now include entries for deleted files that skip the Recycle bin because of the file size limit.
CL-6522	Logs	Error logging is now done when an upload limit is reached for a shared folder.
CL-6127	Multi-tenancy	In a multi-tenancy environment, Site Names and Site Host Names may now include the @ character.
CL-6278	Notifications	Notifications stream now displays a notification when a user is removed from a share.
CL-6781	Notifications	A problem causing users to not receive self-notification emails has been fixed.
CL-6318	Password	The Change Password option no longer incorrectly appears in the user portal for users created through SSO .
CL-7121	Password	The Forgot Password option now appears on the login page for AD and LDAP users, but it does not send a reset email.
CL-6830	Permissions	A problem enabling users to save read-only files using CTRL-S has been fixed.
CL-6575	Policies	In the Admin UI, when a user's policy was edited, no warning was given that the edit was being applied to the default policy for all users; now the warning is given.

CL-6459	Public shares	In Version 20.1, when a file was shared publicly with a password, the password did not appear in the invite email, but this has been fixed.
CL-6622	Recycle bin	In the recycle bin view of the User Details window, admins can now sort files by size and modified date.
CL-7042	Reports	A problem causing the "IP" and "How" columns to display each other's values in the print audit logs has been fixed.
CL-7025	SAML SSO	To prevent internal calls from failing, SAML SSO supports url overrides
CL-6348	Security	Improved security against user enumeration vulnerability has been added.
CL-6897	Security	FileCloud no longer responds to requests to download .gz files.
CL-6569	Settings	In Customization /General/UI Features, the setting Show Single File Share Full Preview was disabled by default, but is now enabled.
CL-6212	Share	A problem in which shares of sub-folders were not removed when shares of the parent folders were removed has been fixed.



CL-5759	Share	When a file is shared and a limited user is invited to create an account, the Allow Share and Allow Sync buttons were incorrectly appearing enabled, but now appear disabled
CL-6760	Share expiration	Share expiration settings can now be set in user policies.
CL-6496	Share preview	A problem causing the URL to continuously refresh when a user attempted to preview a public share has been fixed.
CL-6493	Share settings	In policies, admins can override the setting that prevents users from changing share types (between public and private). See <a href="#">Configure Sharing Defaults</a> .
CL-6845	SSO	A problem causing a user logged in through SSO to be omitted from the 'Get User Login' report has been fixed.
CL-6401	Team Folders	When a promoted admin was given Team Folder access, User Share access was not automatically checked. This has been fixed.
CL-5718	Upload	When FileCloud uploads files, it now display the last modified date instead of the upload date.
CL-6769	Metadata	The system was allowing multiple metadata sets with the same name to be created but this has been fixed.

CL-6795	Metadata	A problem causing hidden and read-only metadata sets to be returned has been fixed.
CL-6788	Metadata	A problem causing the system to attempt to extract metadata from files that were over the size limit has been fixed.
CL-4977	Network Folders	A cache setting has been added to optimize display of network folders. See <a href="#">Network Folder Limitations</a> .
CL-6574	New Account	When an invited user changed the language, the user was taken back to the login screen, but the New Account button was missing. Now, the New Account button appears.
CL-6298	Notifications	A problem causing users who create new shares to receive multiple share expiry notifications has been fixed.
CL-6369	Notifications	A bug preventing the path rule on an external folder to override the main setting has been fixed.
CL-6402	Reports	An issue making it difficult to use the file activity report has been fixed.
CL-5691	SafeLogic	The SafeLogic OpenSSL modules for FIPS have been updated to the latest version.
CL-6904	Search	A search with the word "filename" was not retrieving network share files. This has been fixed.
CL-6412	Search	Advanced search on file extensions now works.

CL-5585	User Interface	The upper-right corner of the user interface now includes more spaces for displaying the name.
CL-5677	User interface	Share screen for private sharing labeled users as "Guest" and included button "Add Guest." These have been changed to "Users" and "Invite Users" for clarity.
CL-6362	User interface	Previously, the browser tab for FileCloud displayed the user's account name, but now it displays the user's display name.
CL-6798	User interface	Devices are now hidden in settings for limited users.
CL-6697	User interface	The label "Quick Edit" has been replaced with "Edit in Desktop" in the user portal.
CL-6481	User interface	In the screen for creating a new account, the Account name field with the placeholder "Enter name" now has the placeholder "Enter username".
CL-6474	User Interface	When users viewed a public share, the encrypted username appeared as the parent folder of the share; this has been fixed so that "Shared with me" appears instead of the encrypted username.
CL-6945	Versioning	In version 20.2, the current version is saved rather than deleted when a previous version replaces it as the current version.

CL-6471	Versioning	A problem that was causing duplicate files to be created when versioning was disabled has been fixed.
CL-6617	WOPI	A feature to change the locale in WOPI has been added to enable users' date format and locale to correspond.
<b>Drive and MacDrive</b>		.
CL-6484	Auto-login	The ability to disable auto-login was not functioning in Drive. This has been fixed.
CL-6598	DocIQ	When a new file is created but not yet uploaded to the server, and a user tries to open it, the message "DocIQ failed to load" has been replaced with "The file information was not found in server."
CL-6796	File Lock	Drive was allowing locked files to be opened. This has been fixed.
CL-6432	File Lock	When a user tries to rename a locked folder, a notice now indicates that a locked file cannot be renamed.
CL-6597	File Lock	A problem after Drive was installed causing files not to lock when edited has been fixed.
CL-6519	File operations	When three consecutive operations were performed on the same file, sometimes the third operation was not completed. This has been fixed.

CL-6436	Installer	The MSI and EXE installers for Drive now remove old versions of Drive when installing the latest one.
CL-6447	Limited users	A problem causing Drive not to create limited user accounts on new file shares has been fixed.
CL-5582	Locks	An issue with automatically setting and releasing locks on Microsoft files in Mac and Windows has been resolved.
CL-2805	Message	When a user tried to perform an action requiring download of a file that was downloading for another operation, an error message that did not explain the issue appeared. Now, the system shows a download progress counter, and the second action is performed when the download completes.
CL-6373	Renaming Folders	A problem that caused renamed folders to appear empty until Drive was restarted has been fixed.
CL-6513	Renaming Folders	A problem causing FileCloud to freeze when a parent folder was renamed has been fixed.
CL-6499	Right-click	A problem causing errors when right-click actions were selected has been fixed.
CL-6978	Right-click	A problem preventing right-click options from working when the FileCloud url had a custom port has been fixed.

CL-6444	Upload /Download	An issue causing upload or download of a large number of files to fail has been fixed.
<b>MacDrive</b>		
CL-6523	Multiple users	An issue causing problems with mounting the drive when multiple users logged in to MacDrive on the same device has been fixed.
<b>Sync</b>		
CL-6837	Log	A duplicate folder name event that was appearing as an error has been fixed to appear as info in the log.
CL-6494	Notifications	A setting has been added that allows admins who have disabled notifications to enable them for errors and important messages only.
CL-7004	Upload files	A problem preventing file upload when the "read-only" sync flag and the "propagate ACL changes to sync" flag were enabled has been fixed.
<b>Mobile</b>		
CL-6962	Android and iOS, Permissions	An error allowing shares with view-only permissions to be copied to other locations has been fixed.
CL-5120	iOS, Favorites	If a user created a folder other than default in Favorites, the folder could not be deleted. To resolve this, options to create, rename and delete Favorite lists from the Favorites' screen have been added.

CL-6150	iOS, Favorites	A problem preventing files or folders from being uploaded into the Favorites folder has been fixed.
<b>Online</b>		
CL-5310	TOS	The correct TOS content for FC Online accounts was only added when the account was initially created. Reset to Defaults for TOS customization sent them to another page instead of resetting the TOS. This has been fixed.
CL-5539	TOS	An issue causing the default rather than custom TOS to display on the customer registration page has been fixed.
<b>ServerSync</b>		
CL-6723	SOLR	An issue preventing files with uppercase extensions from being indexed has been fixed.
<b>ServerLink</b>		
CL-6621	Alerts	Alerts sent from ServerLink were being sent from admin email and to admin email, but are now sent from system default email and to admin email.
CL-6368	Replication	A problem causing secondary server replication to stop randomly has been fixed.
CL-6745	Serial Queue	ServerLink events are now handled in the serial processing high priority queue rather than the parallel queue.
<b>Sync and ServerSync</b>		

CL-6357

Timestamp

A problem preventing the local machine timestamp from being saved for uploaded folders has been fixed.